



Euro Cart

Compact Equipment Cart
Made in the USA

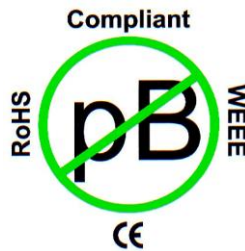


Operation Manual Version 1.0
Copyright 2013
Professional Sound Corporation
Printed in the U.S.A.

Thank you for purchasing the Professional Sound Corporation Euro Cart. PSC is confident that the Euro Cart has set new standards in design for a compact, easy to use and transport equipment cart. Please feel free to contact us at the address below if you have any comments, suggestions, or questions about your new PSC Euro cart. Additionally, we are always open to suggestions for new products that you would like to see developed.

PSC extends a limited one-year parts and labor warranty to all Euro Cart owners.

PLEASE BE SURE THAT YOU HAVE READ AND UNDERSTOOD THIS ENTIRE OPERATIONAL MANUAL BEFORE ASSEMBLING AND/OR USING THE PSC EURO CART!



Professional Sound Corporation
28085 Smyth Drive
Valencia, CA 91355 USA
PH (661) 295-9395
Fax (661) 295-8398

DESCRIPTION:

This new PSC Euro Cart is our modern interpretation of our industry standard PSC sound cart. We have been building our existing sound carts since 1987. This new PSC Euro Cart builds upon that long-standing tradition with many innovative design changes. This entire cart can be disassembled for shipment or storage without the use of any tools. It can also be split into separate top and bottom halves for storage, transport or for use in insert cars. All three shelves can be mounted at various positions (heights). The shelves can also be mounted inverted to form edge-free platforms for use with wider format mixers. The optional 4 space rack ears allow the user to easily mount video monitors and other rack mount equipment. We also offer optional antenna mounts and carpet and edge molding for the shelves. The entire cart is made of aircraft aluminum and hand TIG welded in the U.S.A. In addition, PSC offers a specific built power distribution system called the PSC PowerStar Euro for use with this cart.

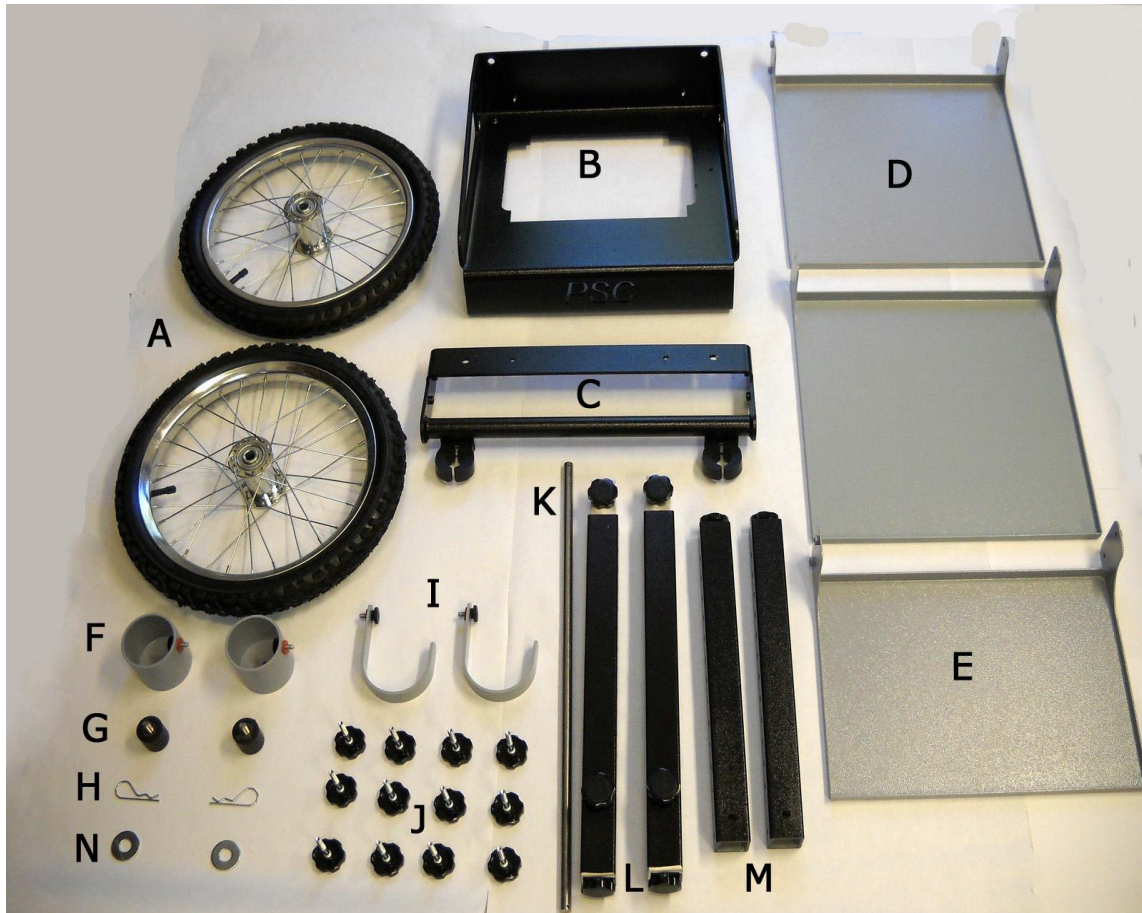
USE:

The PSC Euro Cart is designed to hold and transport sound and video equipment used on television and film sets. The cart is made from light weight, aircraft aluminum and can be easily wheeled around on its 16" pneumatic tires.

Your new PSC Euro cart was carefully assembled, inspected, disassembled and then packed into the supplied double wall cardboard box. Please keep the shipping box, this owner's manual and all of the packing material for future shipments.

PARTS IDENTIFICATION:

Before you start assembly of the PSC Euro Cart, please take a moment to make sure you understand and can identify all of the parts. Below is a list of the parts required. You may notice that we included a few additional bolts. We have provided these to you as spare parts in case you ever lose one.



- A. (2) Wheels**
- B. (1) Cart Base**
- C. (1) Cart Handle**
- D. (2) Large Shelf**
- E. (1) Small Shelf**
- F. (2) Boom Cups**
- G. (2) Rubber Bumpers**
- H. (2) "Hairpin" Clips**
- I. (2) Cable Hooks**
- J. (12) 1/4"-20 x 2" Thumb Screws**
- K. (1) Axle**
- L. (2) Bottom Uprights**
- M. (2) Top Uprights**
- N. (2) Axle washers**

ASSEMBLY:

1. Locate the “base” of the cart and sit in on the floor, upside down.
2. Locate the two rubber bumpers and thread them into the two threaded holes on the bottom side of the cart base as shown in the photo below:



3. Turn the base right side up. Locate the axle and slide it through the holes in both sides of the cart base as shown in the photo below. Slide an axle washer over the axle on both sides.



4. Locate the 16” pneumatic wheels and install one wheel on each side of the cart by placing the wheel over the axle and sliding it into place against the washer.

5. Locate the “Hairpin” clips that are used to secure the wheels to the axels and install them on the outside of each wheel as shown in the photo below:

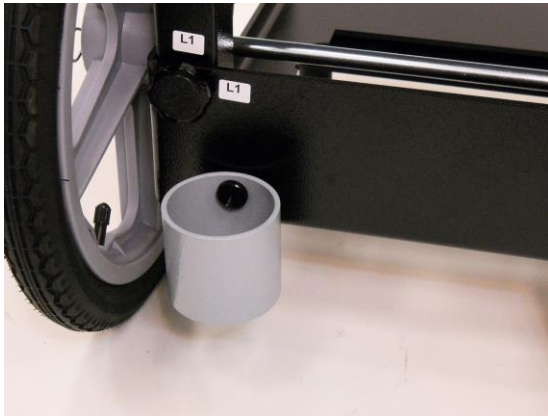
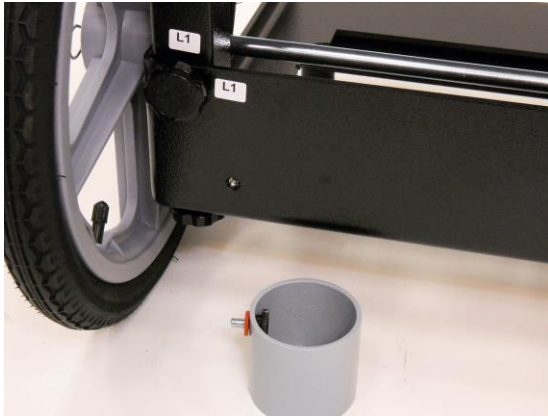


6. Locate the two lower uprights. The lower uprights each have a metal connecting link sticking out of the top of the upright. The lower uprights also have a “left” and “right” hand side to them. Position them according to the stickers attached to the parts and as shown in the photo below. Locate and begin to thread in the thumb screws. DO NOT FULLY TIGHTEN AT THIS TIME. FINAL TIGHTENING WILL BE DONE AFTER THE CART IS COMPLETELY ASSEMBLED!

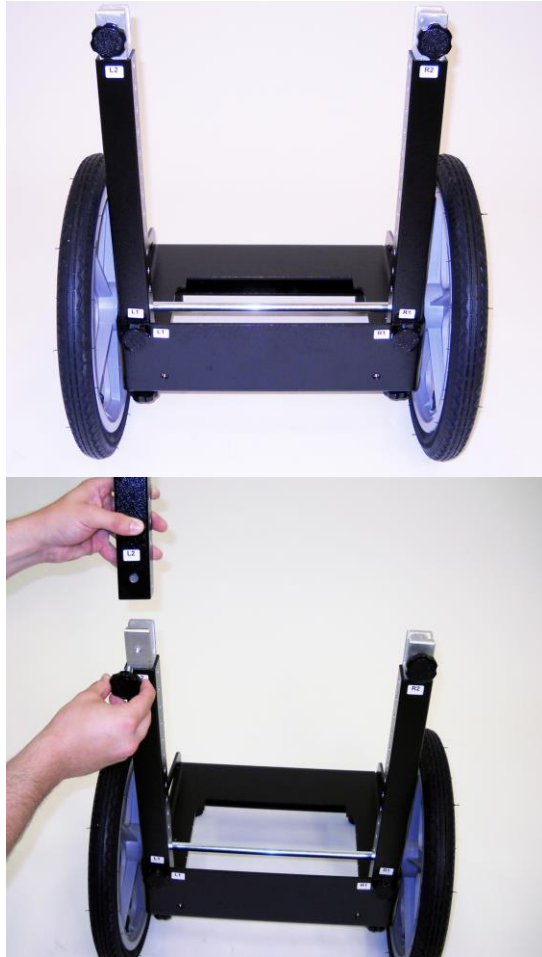




7. Locate the two (2) boom Cups with the two (2) of the $\frac{1}{4}$ -20 SHORT Thumb Screws. Install the two boom cups by inserting the thumb screws through the boom cups and threading them into the threaded inserts in the rear of the cart base as shown in the photo below:



8. Locate the two upper cart uprights. They also have a “Left” and “Right” sided configuration. Place these two uprights on the appropriate sides as indicated by the stickers on the units themselves and as shown in the photo below:



9. Locate and install two (2) of the 3/8-16 Short thumb screws into the back of the bottom uprights, tightening the two sections of the uprights together. Once you have done this, your cart should look like the photo below:



- 10.** Locate one (1) of the Large Shelves and four (4) of the $\frac{1}{4}$ -20 x 2.00" thumb screws. Align the shelf as shown in the photo below so that the shelf attachment ears are located on the outside of the two upright frame rails. We recommend that you locate the bottom shelf so that it is "UP" one set of holes from the bottom most position if you plan on using our PSC PowerStar EuroLiFE power distribution system. This will allow enough room to easily install the PowerStar EuroLiFE.



- 11.** Gently push the thumb screws through the holes in the upright rails ensuring that they line up with the threaded inserts in the shelf ears and just start the threads. **DO NOT COMPLETELY TIGHTEN THUMB SCREW AT THIS TIME! FINAL TIGHTENING WILL BE DONE AFTER THE CART IS COMPLETELY ASSEMBLED!**

12. HELPFUL HINT:

You may find it easier to install the shelf securing thumb screws if you gently lift up on the out edge of the shelf while you thread in the thumb screws as shown in the photo below:



- 13.** Locate the remaining Large shelf and another four (4) 1.4-10 x 2.00" thumb screws. Install the remaining Large Shelf in the same way you installed the first shelf in step 12 above. The location of this second shelf is up to you. We recommend that you install it as shown in the photo below so that it is located flush with the bottom of the "top" set of uprights. If you locate this second shelf at this position, the top half of the cart will sit flat on this second shelf when removed. (see photo below)



- 14.** Locate the small shelf and four (4) of the 1/4-20 LONG Thumb Screws. Position the shelf in your desired location and gently start the thumb screws as you did with the other shelves. **DO NOT FULLY TIGHTEN AT THIS TIME. FINAL TIGHTENING WILL BE DONE AFTER THE CART IS COMPLETELY ASSEMBLED!**

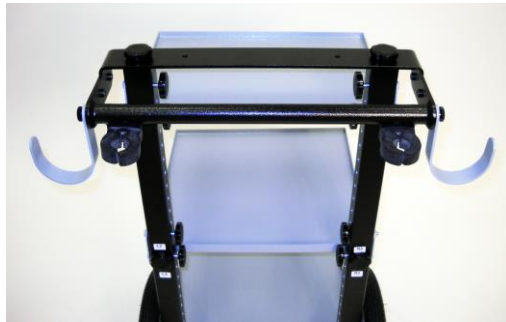
15. Your cart should now look like the photo shown below:



16. Locate the handle assembly and two (2) of the 3/8-16 SHORT thumb screws. Place the handle assembly on top of the upright frame members as shown in the photo below: Gently install the two thumb screws until they are partially thread in only. DO NOT FULLY TIGHTEN AT THIS TIME. FINAL TIGHTENING WILL BE DONE AFTER THE CART IS COMPLETELY ASSEMBLED!



- 17.** Locate the two (2) Cable Hooks and two (2) of the ¼-20 SHORT Thumb Screws. Place the thumb screws through the hole in the cable hook and attach them to the cart using the treaded mounting point as shown in the photo below:



- 18.** Your PSC EuroCart is now fully assembled.

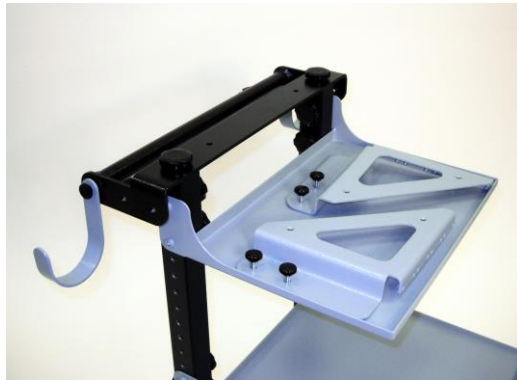
It is now time to go back and tighten up all of the thumb screws you have previously installed. Remember to tighten the two thumb screws located on the bottom of the cart that secure the bases of the uprights.



OPTIONAL ACCESSORIES:

1. RACK MOUNT EARS

PSC offers an optional rack mount kit that allows you to mount up to four (4) spaces of rack mount gear. This would typically include LCD video monitors and wireless receivers. The lightweight yet strong rack mount ears are easily mounted to the PSC EuroCart using the supply $\frac{1}{4}$ -20 x $\frac{5}{8}$ " thumb screws. Please see the photos below for mounting your rack ear kit:



2. ANTENNA MOUNTS

PSC also offers optional RF antenna mounting bars. These antenna mounting bars can be used with or without the rack mount kit. The antenna mounting bars simply attach to the sides of the rack mount ears or the handle assembly using the provided $\frac{1}{4}$ "-20 x $\frac{5}{8}$ " thumb screws. We have included silicone washers to provide resistance between the rack mount ears and the antenna mounts so that they will stay in position. Please also note that the antenna mounting bars can be swiveled downward for travel and/or storage. Please see the photos below

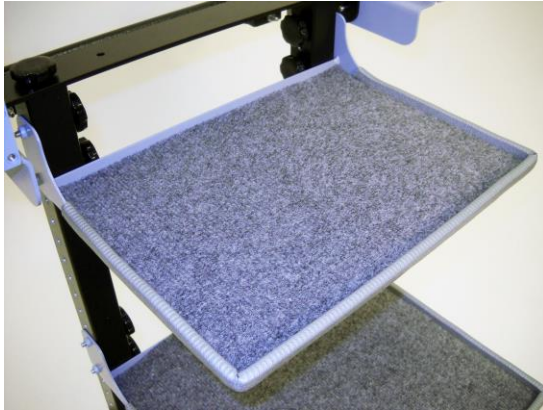
showing the antenna mounting bars in both the upright (use) and downward (travel positions)

NOTE the PSC UHF Log Periodic Antennas shown in the photos are not included with the cart or antenna mounting bar option. They can be purchased from any PSC dealer as our part number FPSC0044.



3. CARPET AND MOLDING

PSC offers an optional carpet and molding kit for the PSC EuroCart. This kit provides a soft carpet covering for all three (3) of the shelves and also includes gray rubber trim that slips over the shelf edges. Please see the photos below for an example of what the Carpet and Molding Kit looks like installed. PSC does not provide any type of adhesive to secure the carpeting to the shelves. This can be done by the end user if desired.



4. POWERSTAR EUROLIFE

The new PSC PowerStar EuroLiFE is based on our very successful PowerStar LiFE. This new unit was designed to complement our new PSC Euro Cart. Small in size and big in power output, the PSC PowerStar EuroLiFE will power everything on your new cart with ease. The main power distribution unit is very small and compact. It easily installs without tools under the handle assembly of your new cart or virtually any cart for that matter. Power is carried from the Battery/AC Supply/Charger via a heavy duty 12AWG cable using 4 pole Neutrik SpeakOn connectors. Our simple, yet accurate battery "Fuel Gauge" allows the operator to see their remaining battery power with just a quick glance of the multiple colored LEDs. There are four convenient USB charging ports located right up front for easy access. The totally available output current is 4 Amps.....the highest in our industry. Need to charge your iPhone, iPad or other USB chargeable device? No problem. All of the power output XLR connectors face downward to allow clean and clutter free cable routing. This power Supply like all of the other PSC power products contains our exclusive PSC Quiet Power Technology. Every output is equipped with custom designed output filters to help eliminate inter-modulation noise caused when powering multiple devices from one power source. PSC is the only company that takes the time and expense of adding these components

because we believe quiet audio starts with quiet DC power. If it's worth powering, it's worth powering correctly. While no power filter can eliminate all potential noise issues, we feel the added value of our filters make the PSC line of power products better than the rest. This designed in feature is a PSC exclusive.



PSC RECCOMENDATION:

PSC recommends that you periodically check and tighten all of the thumb screws.

WARNING!

THE PSC EURO CART IS MADE OF METAL AND IS THUS ELECTRICALLY CONDUCTIVE! DO NOT USE THIS CART ON OR AROUND ELECTRICALLY CONDUCTIVE POWER LINES, POWER POLES, OPEN ELECTRICAL EQUIPMENT OR ANY OTHER SUCH ELECTRICALLY HAZARDOUS CONDITION. PLEASE ALSO NOTE THAT MODERN CARBON FIBER AND ALUMINUM BOOM POLES ARE ELECTRICALLY CONDUCTIVE AND SHOULD BE TREATED AS SUCH. IN ADDITION, ANNTENNAS, AND ANTENNA MOUNTS ARE ALSO ELECTRICALLY CONDUCTIVE AND SHOULD THUS BE TREATED AS A POTENTIAL ELECTRICAL HAZARD. DO NOT RAISE OR CAUSE ANY BOOM POLE, ANTENNA OR OTHER CART APPENDAGE TO CONTACT ANY FORM OF ELECTRICAL POWER SUCH AS OVERHEAD POWER LINES, LIGHTING EQUIPMENT OR OTHER ELECTRICAL HAZARD.

TERMS OF USE:

THE IMPROPER USE, ELECTRICAL CONNECTION, EQUIPMENT MOUNTING OR HANDLING OF THIS CART IN RELATION TO ANY AUXILIARY EQUIPMENT MAY RESULT IN DAMAGE TO SAID EQUIPMENT. THE OPERATOR OF THIS EURO CART ASSUMES ALL RESPONSIBILITY AND LIABILITY! PROFESSIONAL SOUND CORPORATION AND/OR ITS EMPLOYEES AND OFFICERS ASSUME NO RESPONSIBILITY OR LIABILITY FOR PERSONAL AND PROPERTY DAMAGE INCURRED DUE TO ACCIDENT, CARELESS HANDLING, ABUSE OR MISSUSE, IMPROPER CONNECTION, IMPROPER EQUIPMENT MOUNTING, USE ON UN-EVEN TERRAIN, OVER LOADING OF THE CART AND/OR IMPROPER ASSEMBLY, INSTALLATION, IMPROPER ELECTRICAL CONTACT OR GROUNDING. OWNERSHIP AND/OR USE OF THE PSC EURO CART CONSTITUTES AGREEMENT WITH THESE TERMS.

LIFTING INSTRUCTIONS:

This PSC EuroCart has been designed to be as light weight as possible for your convenience in the field. Because of this light weight design, care must be taken when lifting the cart into and out of work vans, sound stages, camera trucks, etc. This cart has been powder coated two distinctive colors for a very valid reason. The two colors are used to designate where the cart can be lifted up from. The EuroCart should only be lifted from the BLACK powder coated sections of the cart! Do NOT lift the cart by grasping any of the GRAY Shelves, Gray Cable Hooks, Gray Boom Pole Cups or Gray Rack Mount Ears. If it's painted Gray, DO NOT LIFT THE CART FROM THAT PART! DAMAGE MAY RESULT THAT WILL NOT BE COVERED UNDER THE PSC WARRANTY.

Limited Warranty

Professional Sound Corporation warrants the PSC EuroCart to be free of defective material and workmanship for a period of one year from the original date of purchase and agrees to repair or replace such defective part(s) or the whole product at its option, provided that the equipment is returned to Professional Sound Corporation. Shipping and insurance costs to and from Professional Sound Corporation must be prepaid by the owner. This warranty does not cover damage due to accident, careless handling, abuse or misuse, improper connection and/or installation, improper electrical contact or grounding. This warranty does not cover bent or damaged shelves, uprights, cart base, or other frame parts and hardware that have been overloaded with weight beyond the design capacity of the individual shelf, frame member, fastener, handle or the entire cart. This warranty does not cover damage to Gray painted parts caused by lifting the cart via those gray parts. This warranty will be null and void in the event of removal, alteration or tampering with the serial number, or by service or repair work not performed by Professional Sound Corporation. Proof of purchase date (copy of invoice) must be furnished before warranty service will be performed. This warranty is in lieu of any other warranty, expressed or implied, including warranties without limitation, products being merchantable at the time of purchase or suitable for a particular purpose. This warranty does not extend to, or include consequential damage.

SPECIFICATIONS:

Size:	37" Tall x 19" Wide x 21" Deep (94cm x 48cm x 53cm)
Self Size:	Small Shelf 14.5" Wide x 10" Deep (36.8cm x 25.4cm) Large Shelf 14.5" Wide x 14.5" Deep (36.8cm x 36.8cm)
Weight:	27.8Lbs (12.6Kg)
Material:	Aircraft Aluminum
Construction:	Hand TIG Welded, Assembled with Thumb Screws
Finish:	Powder Coat, Textured
Capacity:	Individual Shelf: 15 lbs (6.8Kg) Entire cart: 50 Lbs (22Kg)
Wheels:	Chrome Spoke Bicycle Style
Tires:	16" x 1.75" (305mm x 47mm)
Warranty:	Limited, One Year, Parts and Labor.

Professional Sound Corporation
28085 Smyth Drive
Valencia, CA 91355 USA
PH (661) 295-9395
Fax (661) 295-8398